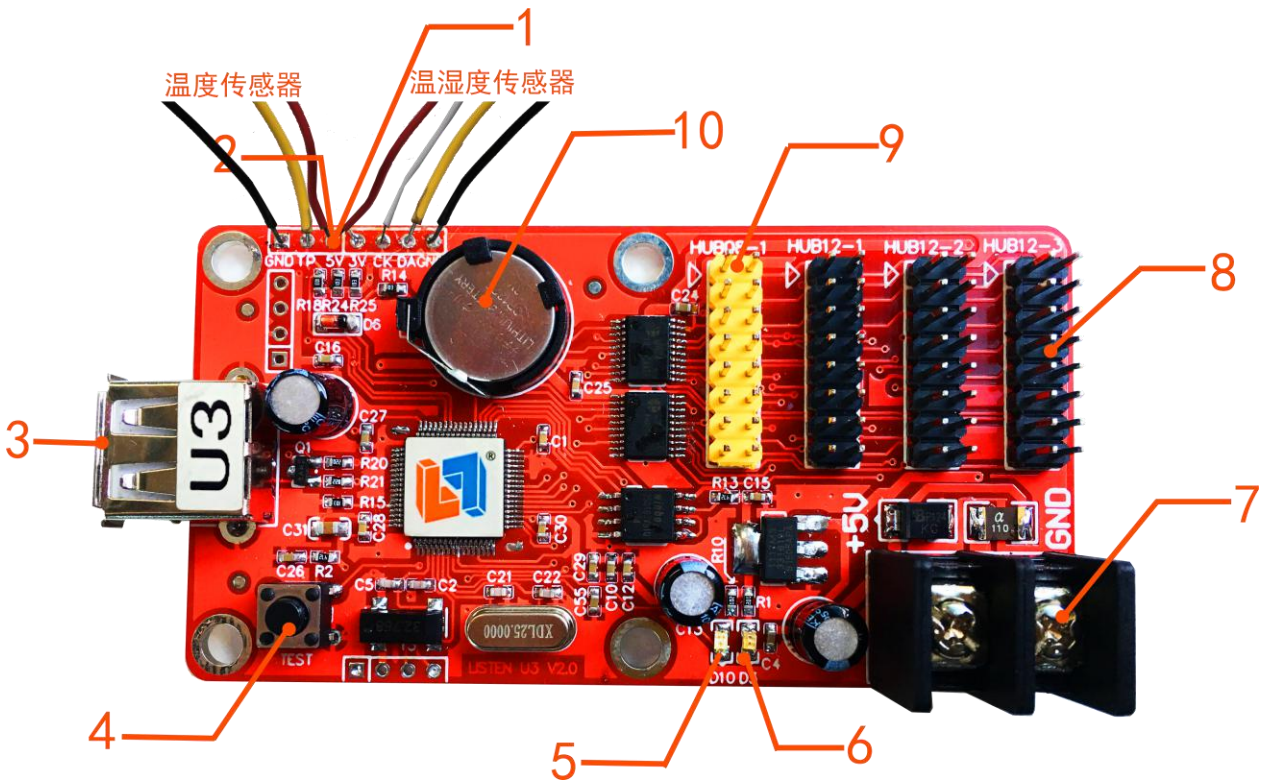


# SPECIFICATION FOR U3

Version	Date	Reason
V2.00	21/03/2017	Document

## Hardware



Number	Interface Name	Description
1	Temperature & Humidity Sensor	Temperature & Humidity Interface
2	Sensor Interface	Connect Sensor
3	USB Interface	USB
4	Multi-functional Button	Functions: 1.test LED display 2.reset factory data
5	Operation Light	Show operating status
6	5V Power Light	Show Power status
7	5V Power port	Wide voltage input 4.5V-6V
8	HUB12	HUB12 interface
9	HUB08	HUB08 interface
10	RTC Button Battery	RTC Battery, voltage 3V, CR1225

## Parameters

<b>Application</b>	All LED display
<b>Pixels</b>	Single: 32K    double : 24K
<b>Load</b>	single: 2048*16    1536*32    1024*48 ( max 1280*48 ) Double:1536*16    768*32    512*48
<b>Software Function</b>	Multi-area display, multi-language
<b>Program</b>	128 programs, each has 16 areas
<b>Area Type</b>	Subtitle/ text/ image/ program frame/ area frame/ animation/ background/ digit clock/ timing area/ dial plate area/ static excel/ temperature/ humiture
<b>Frame</b>	Program water frame/ area water frame
<b>Clock</b>	Digit clock/ analog clock/ count up/ down
<b>Communication Mode</b>	USB interface ( U disk , FAT , FAT32 , ExFAT )
<b>Display Interface</b>	3*HUB12 , 1*HUB08
<b>Sensor</b>	Temperature sensor (water-proof, high precision) , temperature& humidity sensor (high precision)
<b>Brightness Loss</b>	16 level, adjust brightness automatically or via software
<b>Remote Switch</b>	Timing auto switch or via software
<b>Startup Picture</b>	Startup picture, startup program )
<b>Voltage</b>	5V(4.5-5.5V) , < 1W
<b>Memory</b>	2MByte
<b>Working Temperature</b>	-40℃-85℃
<b>Secondary Development</b>	DLL dynamic library
<b>Auxiliary Software</b>	LED Player 6.0 ( LED Player 6.1.xx )

## Dimension Drawing

